

-  Sewage
-  Civil use
-  Industrial use

※ **Advanced design and high-quality materials assure long-term performance and reliability**



## PERFORMANCE RANGE

- Flow rate up to **1800 l/min** (108 m<sup>3</sup>/h)
- Head up to **27 m**

## INSTALLATION AND USE

The **VX** series is constructed from thick stainless steel and cast iron, offering exceptional robustness, abrasion resistance, and durability. The pumps feature **VORTEX**-type impellers, renowned for their reliable operation and minimal risk of clogging.

Recommended for various applications including sewage with suspended solids, wastewater, rainwater, city sewage, and industrial wastewater.

They are suitable for a wide range of applications, including sewers, tunnels, excavations, canals, and underground parking facilities.

## ELECTRIC MOTOR

※ **The electric motor is safeguarded by a special three-phase thermal protector, situated within the motor, which activates in case of overheating or abnormal power consumption.**

## INCLUDES

- ※ Power cable length **10 m**

## APPLICATION LIMITS

- Depth below water level up to **10 m** (with an appropriately sized power cable)
- Liquid temperature up to **+40 °C**
- Suspended solids transfer:
  - up to **Ø 50 mm** for VX/50
  - up to **Ø 65 mm** for VX/65
  - up to **Ø 80 mm** for VX/80
- **Minimum immersion for continuous service: 500 mm**

## AVAILABLE UPON REQUEST

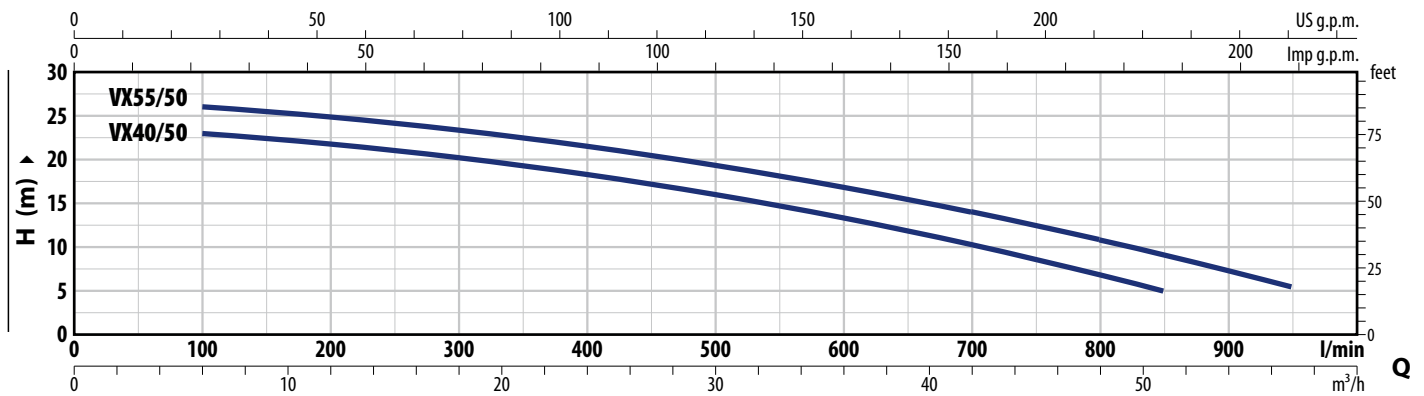
- ※ Different voltage requirements or frequency

## PATENTS - TRADE MARKS - MODELS

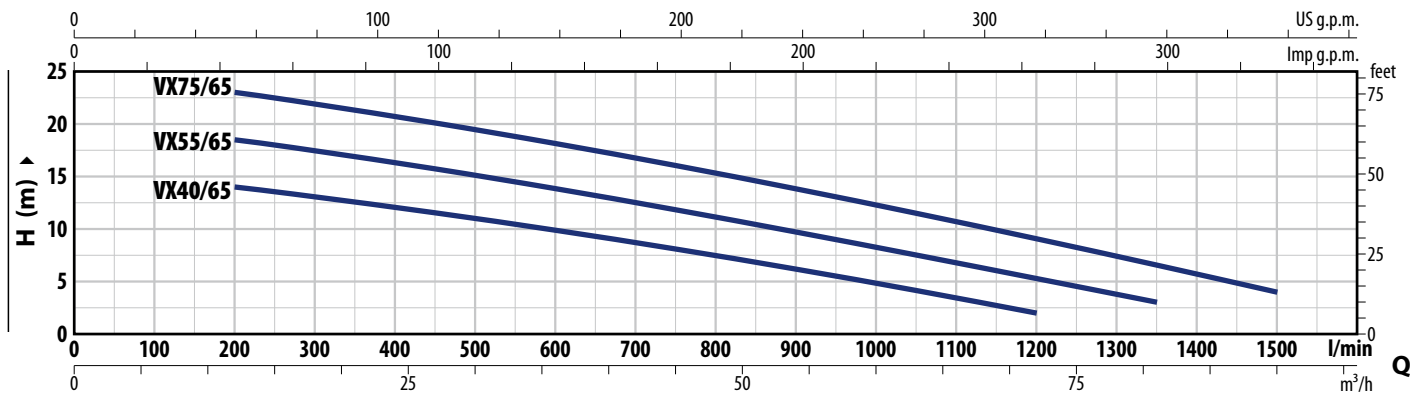
- Registered Community Model No. 003863158-0002

## CURVES AND PERFORMANCE DATA

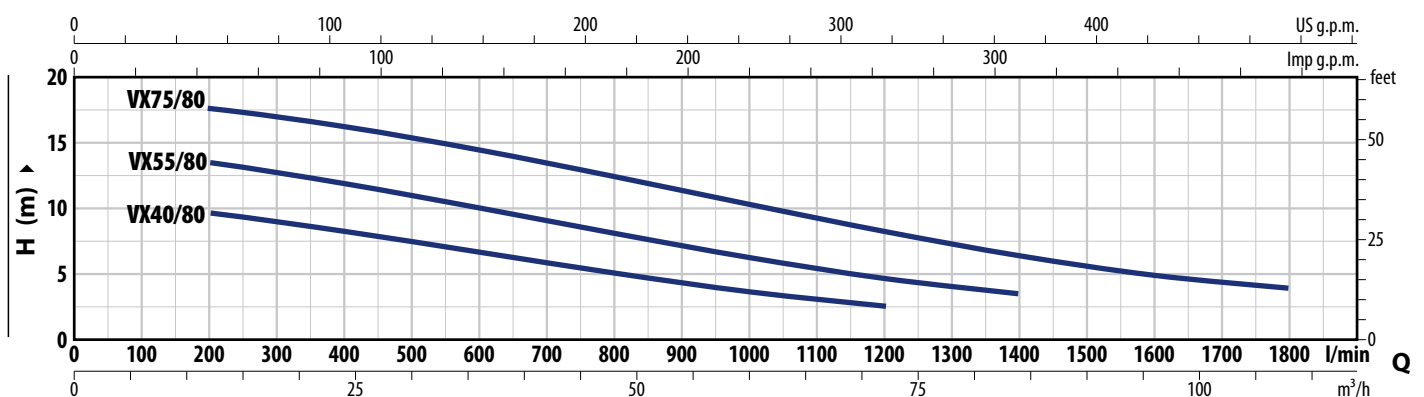
**60 Hz**



TYPE Three-phase	POWER (P <sub>2</sub> )		Q	Flow rate													
	kW	HP		m <sup>3</sup> /h	0	6	12	18	24	30	36	42	48	51	57		
VX 40/50	3	4	H m	0	100	200	300	400	500	600	700	800	850	950			
VX 55/50	4	5.5	H m	24	23	21.8	20.3	18.4	16.1	13.4	10.3	6.9	5				
				27	26	25	23.4	21.6	19.4	16.9	14	10.9	9.2	5.5			



TYPE Three-phase	POWER (P <sub>2</sub> )		Q	Flow rate													
	kW	HP		m <sup>3</sup> /h	0	12	18	27	36	45	54	63	72	81	90		
VX 40/65	3	4	H m	0	200	300	450	600	750	900	1050	1200	1350	1500			
VX 55/65	4	5.5	H m	15.7	14	13.1	11.6	9.9	8.1	6.2	4.2	2					
VX 75/65	5.5	7.5	H m	20.3	18.5	17.5	15.7	13.8	11.8	9.7	7.5	5.3	3				
				25	23	21.9	20.1	18.2	16	13.8	11.5	9.1	6.6	4			



TYPE Three-phase	POWER (P <sub>2</sub> )		Q	Flow rate													
	kW	HP		m <sup>3</sup> /h	0	12	24	36	48	60	72	84	96	108			
VX 40/80	3	4	H m	0	200	400	600	800	1000	1200	1400	1600	1800				
VX 55/80	4	5.5	H m	10.5	9.5	8.2	6.7	5.1	3.6	2.5							
VX 75/80	5.5	7.5	H m	14.5	13.5	11.9	10	8.1	6.3	4.7	3.5						
				18.5	17.5	16.2	14.4	12.4	10.3	8.2	6.4	4.9	4				

Q = Flow rate H = Total manometric head

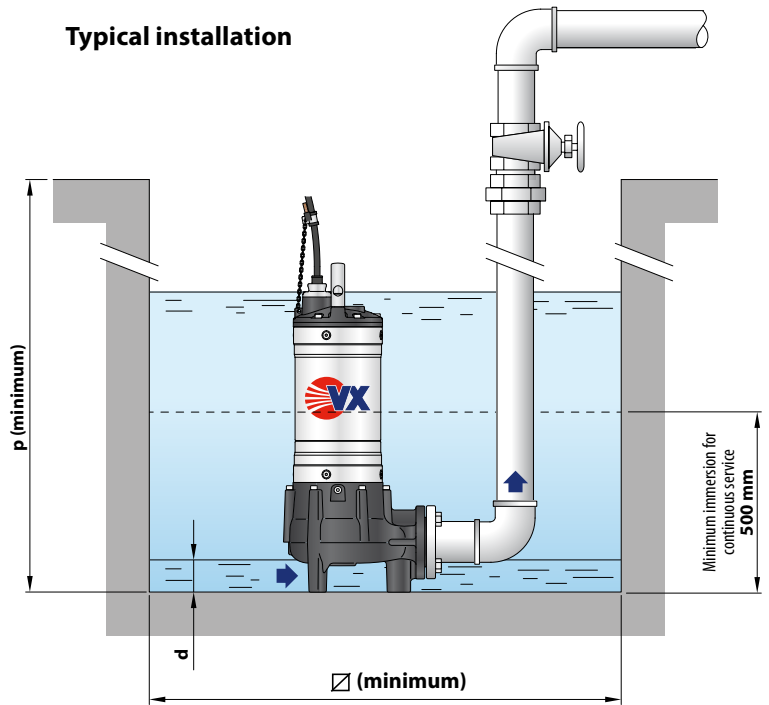
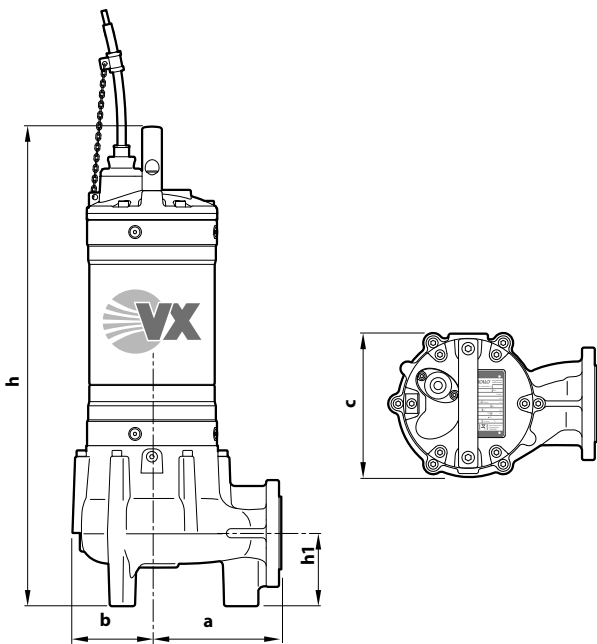
Performance curves comply with EN ISO 9906 Grade 3B tolerance limits.

## ABSORPTION

TYPE	VOLTAGE	
	380 V	440 V
Three-phase		
VX 40/50	7.0 A	6.0 A
VX 55/50	8.2 A	7.1 A
VX 40/65	7.0 A	6.0 A
VX 55/65	9.4 A	8.2 A
VX 75/65	15.5 A	12.0 A

TYPE	VOLTAGE	
	380 V	440 V
Three-phase		
VX 40/80	8.0 A	7.0 A
VX 55/80	10.0 A	8.7 A
VX 75/80	16.5 A	14.3 A

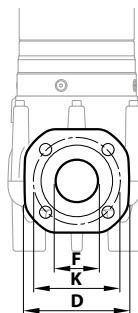
## DIMENSIONS AND WEIGHT



TYPE	Passage of solid bodies	DIMENSIONS mm								kg
		a	b	c	h	h1	d	p	∅	
Three-phase	∅ 50 mm	170	106	193	602	100	55	700	500	3~
VX 40/50					642					50.0
VX 55/50					630					59.0
VX 40/65	∅ 65 mm	170	107	196	670	121	70	800	500	54.0
VX 55/65					700					60.0
VX 75/65					655					67.0
VX 40/80	∅ 80 mm	178	107	210	695	150	85	800	500	54.8
VX 55/80					725					60.0
VX 75/80										68.0

## PORT FLANGE

TYPE	FLANGE	F	K	D	HOLES		
					N°	∅ (mm)	
Three-phase	DN						
VX 40/50	50	2"	125	150	4	18	
VX 55/50	(PN10)						
VX 40/65	65	2½"	145	185	8	18	
VX 55/65							(PN10)
VX 75/65							
VX 40/80	80	3"	160	200	8	18	
VX 55/80							(PN10)
VX 75/80							



## PALLET CAPACITY

TYPE	GROUPAGE	CONTAINER
Three-phase		
VX 40/50	12	16
VX 55/50	12	16
VX 40/65	12	16
VX 55/65	12	16
VX 75/65	12	16
VX 40/80	12	16
VX 55/80	12	16
VX 75/80	12	16

## MATERIALS AND COMPONENTS

**1 Pump body** Cast iron with cataphoresis treatment

**2 Impeller** Cast iron VORTEX type with cataphoresis treatment

**3 Motor sleeve** Stainless steel **AISI 304**

**4 Motor cover** Cast iron with cataphoresis treatment

**5 Motor shaft** Stainless steel **AISI 431**

### 6 Double mechanical seal with interposed oil chamber

Water pump	Seal	Shaft	Location	Materials
<b>VX 50</b>	<b>ED560-25</b>	Ø 25 mm	Motor side	Silicon carbide / Graphite / NBR
			Pump side	Silicon carbide/Silicon carbide/NBR
<b>VX 65-80</b>	<b>AR-27</b>	Ø 27 mm	Motor side	Silicon carbide / Graphite / NBR
	<b>AR-25</b>	Ø 25 mm	Pump side	Silicon carbide/Silicon carbide/NBR

### 7 Electric Motor

Three-phase 380 V - 60 Hz or 440 V - 60 Hz  
with winding integrated thermal motor protection

- Insulation: class F
- Protection rating: IP X8

### 8 Power cord

※ 10 metres 'H07 RN-F' type

